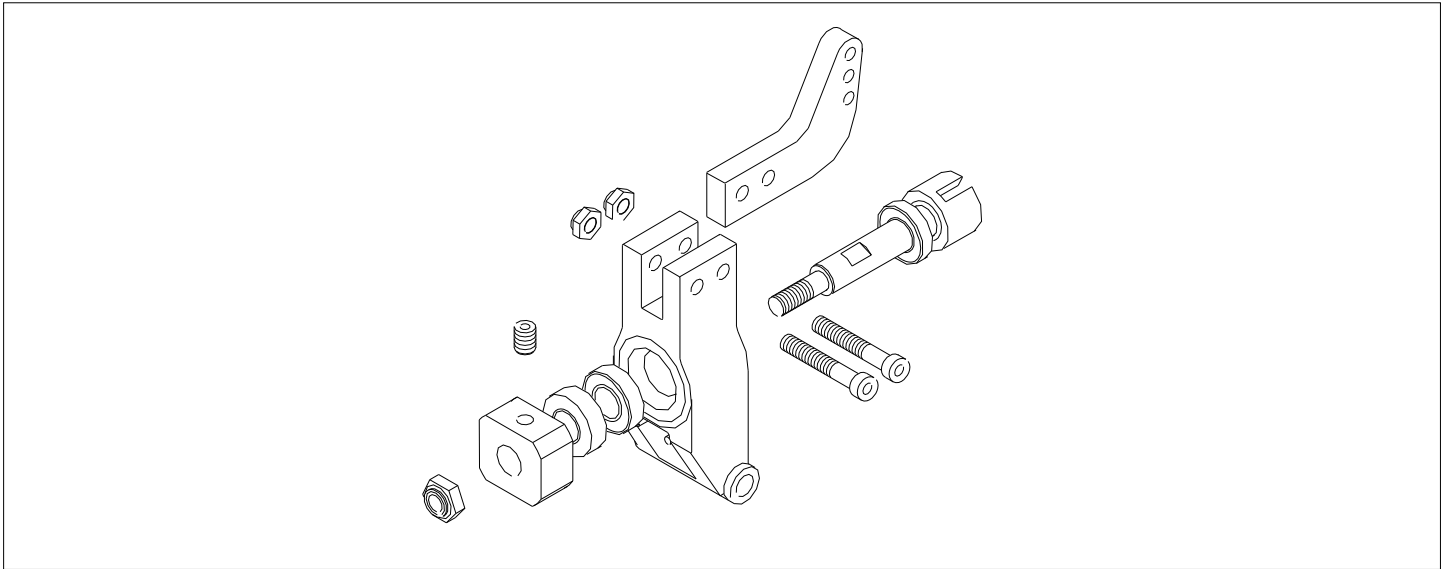


76/108b Rear Axle Assembly Instructions - Sheet 10



76/236	Drive Cup - Differential
76/280	Axle Block Moulding
76/281	Arm - Rear Axle Block
76/282a	Axle & Drive Cup
76/283a	Wheel Driver Spacer
72/234	Wheel Driver - 18mm Square
76/284	Drive Shaft & Pins
90/208	Ballrace 8 x 16 x 5mm
94/200	M4 Nylock Nut
94/225	M4 x 25mm Socket Cap Screw
95/206	M5 x 6mm Grub Screw
96/200	M6 Nylock Nut

- 1). Push ball race into front housing of moulding.
- 2). Place other ball race on axle, and push bearing into rear of moulding.
- 3). Fit wheel driver spacer to axle with hollow side towards the wheel then fit wheel driver, coat grub screw with thread locking compound and tighten well. Ensure a small amount of end float remains.
- 4). Mount rear axle block arm with M4 nuts and bolts.
- 5). Fit other grub screw to drive cup, ready to fit to differential and drive shaft later.

